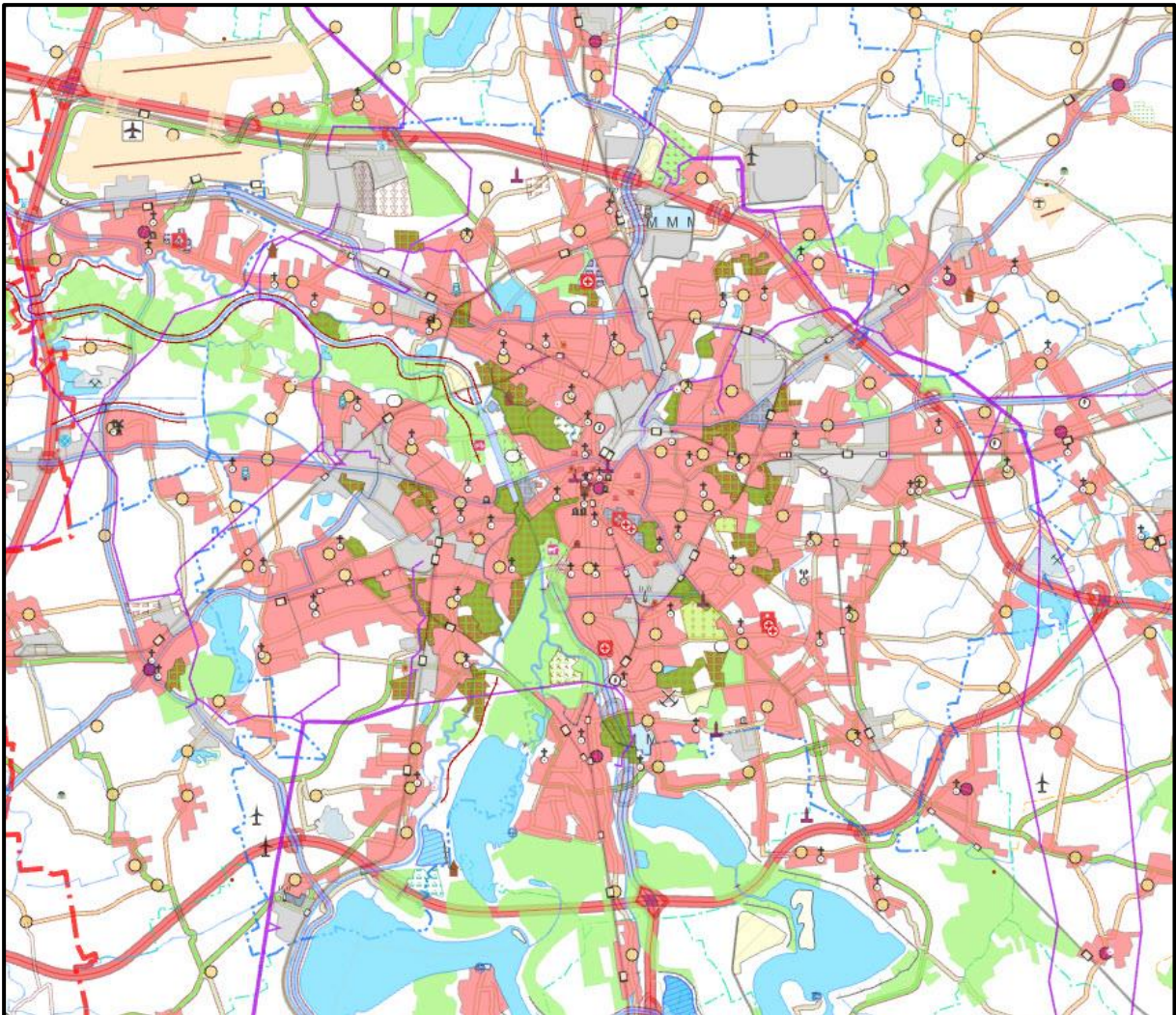




# Documentation

Digital Landscape Model 1:250 000

DLM250



Product as of December 2024

## Contents

<b>1</b>	<b>Overview of the dataset</b>	<b>3</b>
<b>2</b>	<b>Description of dataset and online services</b>	<b>4</b>
2.1	Contents and format	4
2.2	Modification against last Dataset	5
<b>3</b>	<b>DLM250 Specification (Compact)</b>	<b>6</b>
3.1	Description of the dataset	6
3.2	Description of the data exchange format	6
<b>4</b>	<b>Specification DLM250 (Levels)</b>	<b>7</b>
4.1	Description of the dataset	7
4.2	Overview of the attribution of the feature types to different levels	9
<b>5</b>	<b>Topicality and completeness</b>	<b>51</b>
<b>6</b>	<b>Recording criteria and notes</b>	<b>53</b>
<b>7</b>	<b>Further Information</b>	<b>58</b>

## 1 Overview of the dataset

<b>Product:</b>	Digital Landscape Model 1:250 000 (DLM250)
<b>Content:</b>	Description of the topographic landscape objects in vector format on the basis of the AFIS-ALKIS-ATKIS data model
<b>Area:</b>	Federal Republic of Germany
<b>Spatial reference:</b>	<ul style="list-style-type: none"><li>▪ UTM projection in zone 32, Ellipsoid GRS80, Datum ETRS89</li><li>▪ Gauß-Krüger projection in the 3<sup>rd</sup> meridian strip, Bessel Ellipsoid, Potsdam Datum (central point Rauenberg)</li></ul>
<b>Position accuracy:</b>	± 100m (see also section 2)
<b>Topicality and completeness:</b>	see section 5
<b>Data formats:</b>	<ul style="list-style-type: none"><li>▪ NAS (for compact)</li><li>▪ SHAPE (for levels)</li></ul>
<b>Provision*:</b>	<ul style="list-style-type: none"><li>▪ Record via Download</li><li>▪ Web Feature Service</li></ul>
<b>Historical data:</b>	Available since 2007
<b>Data volume:</b>	<ul style="list-style-type: none"><li>▪ NAS 1400 MB</li><li>▪ SHAPE 883 MB</li></ul>
<b>Data creator:</b>	Bundesamt für Kartographie und Geodäsie

\* Please note that not all forms of delivery can be provided with all georeferencing and data formats. If you have any questions, feel free to contact the service center.

## **2 Description of dataset and online services**

### **2.1 Contents and format**

The Digital Landscape Model 1:250 000 (DLM250) is part of the 'Amtliche Topographisch-Kartographische InformationsSystem' (official topographic-cartographic informationsystem) ATKIS® and is based on the joint data-model for AFIS®, ALKIS® and ATKIS®.

The Documentation on the modelling of the geodata of Official Surveying and Mapping (in short: GeoInfoDok) describes the AFIS®, ALKIS® and ATKIS® projects with their characteristics defined on a Länder-crossing basis in a continuous form. In the basic scheme, fundamental characteristics of geo objects have been illustrated. In the AAA-application scheme the application objects with their attributes are described. Of particular interest to the user is the division of the ATKIS feature type catalogues into object themes, feature type groups and feature types. A data exchange format based on open standards is specified in the present documentation on Norm-based Exchange Interface (NAS).

All documents of the GeoInfoDok have been published on the internet pages of the Arbeitsgemeinschaft der Vermessungsverwaltungen der Länder der Bundesrepublik Deutschland ([Adv](#)). Within the scope of this product documentation reference is made to these documents for the purpose of further representations and explanations.

The DLM250 describes the topographical objects of the landscape in vector format. The objects are assigned to a certain feature type and defined on the basis of their spatial position, their geometrical type, their descriptive attributes and their relations to other objects (relations). The spatial position is indicated for the DLM250 independently of scale and projection. The data have been generalized cartographically according to the symbolization catalogue 1:250 000 (SK250) of the Digital Topographic Map 1:250 000 (DTK250). Each object possesses an object identifier (OID) which is unique throughout Germany and constant for the whole lifetime of the object.

The DLM250's scope of information is described with detailed information on the individual feature types, attributes along with the attribute values and the modelling modes "[ATKIS®-Objektartenkatalog DLM250](#)" and in this documentation.

In contrast to the Basis-DLM the DLM250 does not contain the complete information on the real ground surface use. The contents concern selected feature types with certain attributes in connection with recording criteria. For example, the feature class "vegetation" contains few feature types with a recording criterion concerning the areal size of the objects in question.

In the DLM250 the positional accuracy for all objects is  $\pm 100\text{m}$ . Dependent on resolution the generalization may lead to a higher value.

For the data release two types of product-processing are designed:

### **Compact**

The DLM250 (Compact) represents the DLM250 precisely as described in the respective reference version of the GeoInfoDok. Its exchange format is the Norm-Based Exchange Interface (NAS).

### **Levels**

The DLM250 (Levels) contains the whole extent of contents, but is organized with a simpler thematic data structure, which should be useful for many applications. It is based on ESRI Shapefiles.

## **2.2 Modification against last Dataset**

The feature type 62030 AX\_Strukturlinie3D is part of the REL02 level.

### 3 DLM250 Specification (Compact)

#### 3.1 Description of the dataset

The dataset follows the specifications defined in the GeoInfoDok AFIS-ALKIS-ATKIS-schema Version 7.1.2. The following documents supply comprehensive data on general AAA-model fundamentals, contents and modelling rules of the DLM250:

- [Main document](#)  
(General Documentation on the AAA-reference model, base scheme, NAS, etc.)
- [ATKIS® feature type catalogue DLM250](#)  
(feature types with definition, attributes, relations etc.)

In addition:

- [Modelling examples on the ATKIS® Basis-DLM](#)
- [List of the topicality ATKIS® Basis-DLM](#)

#### 3.2 Description of the data exchange format

The exchange of data in the AAA-data model is made via the Norm-Based Exchange Interface (NAS). The following documents provide comprehensive information on this interface:

- [Main document](#)  
(General Documentation on the AAA-reference model, base scheme, NAS, etc.)
- [External model data exchange](#)  
(all XML scheme files)

The data are distributed according to the following procedure:

- **Extract of inventory data**  
Data contents corresponds to a spatial and/or semantic selection from the entire dataset without possibility of a differential update.
- **User-related updating of inventory data (NBA)** (presently only available as initial equipment)  
For the keeping of secondary data sets by means of initial data equipment and subsequent differential updates (related to reporting date). The data content corresponds to a once fixed spatial and/or semantic selection from the entire dataset.

## 4 Specification DLM250 (Levels)

### 4.1 Description of the dataset

Beside the NAS the product constitutes an alternative data format for ATKIS data of the model type DLM250. In this case the focus is particularly on the immediate, uncomplicated usability of a simple level-orientated data structure in systems visualizing or further processing geodata.

#### Main characteristics from the user's point of view:

- Bundling of semantically associated feature types through definition of thematic levels.
- Direct connection of attributive data to the respective object geometries.
- Connection of non-spatial data to the relevant objects with spatial reference as far as possible.

#### Determinations on product definition:

- The data content is based on the shown scope of objects in the GeoInfoDok (feature type catalogue).
- The data model supports porting of all geometry-related feature types listed in the feature type catalogue.
- All ported data contents are provided as Shape files. Given that the Shape format can only receive objects of the same geometry type, levels normally consist of several partial levels for each relevant geometric object characteristic.
- The feature types without spatial reference (ZUSO, NREO, catalogues) contained in the DLM250 are dissolved and the technical data are directly annexed to the relevant objects with spatial reference. Thus, e.g. explicit porting of the relation *istTeilVon* is omitted.

#### Naming conventions:

- The name of a level is composed of an abbreviation for the subject with regard to contents, a consecutive numbering of the respective levels within a specific subject and an identifier for the geometry type of the objects contained.  
Example:  
Level „gew01\_f“ belongs to the level „01“ in the subject “water bodies“ and contains areal objects.
- Because of the Shape specific restriction to 10 characters the naming of the attributes cannot be done in long form as stated in the AAA-feature type catalogue. Instead, the additionally indicated attribute identifiers consisting of three characters are used (e.g. ADF for *administrativeFunktion*). It must be taken into account that some attribute identifiers can be relevant for different feature types.
- For object attributes without an indication of a short attribute identifier in the OK (e.g. AX\_Lebenszeitintervall.beginnt, AA\_Modellart.advStandardModell etc.) a designation with a maximum of 10 characters is used which can possibly deviate from the data model.

### Attribute definitions:

- For the designation of the property attributes the short forms which are listed in the object catalogue are used. In the case of general object attributes without defined short forms self-defined short forms are used.
- Every object has an attribute which marks whether the object has an underpass relation *hatDirektUnten* or not (attribute name HDU\_X). The opposite overpass relation is not marked.
- All *hatDirektUnten* relations are combined in a separate level and are not attached to the respective objects. This level has no geometry. Thereby the evaluation of over- and underpasses in the data set is facilitated.
- If attributes have several value assignments (multiple attributes, e.g. cardinality 1..\*) the single values are combined as a string. The hash (#) acts as separator.
- The combination of different, thematically related feature types in one level leads to not all attributes of this level applying to every object. In this case text attributes remain empty. Numerical attributes have the value "-9999,0".
- If a numerical attribute is empty it has the value "-9998,0".

### Changes of GeolInfoDok

In section 4.3 modifications (additions or deletions) are compared with the GeolInfoDok AFIS-ALKIS-ATKIS-schema 7.1.2 for a future GeolInfoDok AFIS-ALKIS-ATKIS-schema and made visible by footnotes:

<sup>1</sup> Supplement in contrast to AFIS-ALKIS-ATKIS-schema version 7.1.2

<sup>2</sup> Cancellation in contrast to AFIS-ALKIS-ATKIS-schema version 7.1.2

<sup>3</sup> Additional field, not part of AFIS-ALKIS-ATKIS-schema

The footnote details are summarized at the end of each theme.



## 4.2 Overview of the attribution of the feature types to different levels

Level	Content	Feature type
-------	---------	--------------

Object theme: Settlement		
<a href="#">SIE01</a>	site, named location	52001 AX_Ortslage
<a href="#">SIE02</a>	areas dominated by buildings	41002 AX_IndustrieUndGewerbeflaeche 41003 AX_Halde 41005 AX_TagebauGrubeSteinbruch 41007 AX_FlaecheBesondererFunktionalerPraegung 41008 AX_SportFreizeitUndErholungsflaeche 41009 AX_Friedhof 41010 AX_Siedlungsflaeche
<a href="#">SIE03</a>	buildings and other facilities	51002 AX_BauwerkOderAnlageFuerIndustrieUndGewerbe 51004 AX_Transportanlage 51005 AX_Leitung 51006 AX_BauwerkOderAnlageFuerSportFreizeitUndErholung 51007 AX_HistorischesBauwerkOderHistorischeEinrichtung 51009 AX_SonstigesBauwerkOderSonstigeEinrichtung
<a href="#">SIE04</a>	special facilities at settlement areas	52002 AX_Hafen 52003 AX_Schleuse 52005 AX_Testgelaende
<a href="#">SIE05</a>	buildings	31001 AX_Gebaeude 51001 AX_Turm

Object theme: Traffic		
<a href="#">VER01</a>	road traffic	42003 AX_Strassenachse  ZUSO: 42002 AX_Strasse
<a href="#">VER02</a>	paths	42008 AX_Fahrwegachse 53003 AX_WegPfadSteig
<a href="#">VER03</a>	railway traffic	42010 AX_Bahnverkehr 42014 AX_Bahnstrecke 53005 AX_SeilbahnSchwebebahn
<a href="#">VER04</a>	air traffic	42015 AX_Flugverkehr
<a href="#">VER05</a>	shipping traffic	57002 AX_SchiffahrtslinieFaehrverkehr

Level	Content	Feature type
<a href="#">VER06</a>	transport buildings and facilities	53001 AX_BauwerkImVerkehrsbereich 53002 AX_Strassenverkehrsanlage 53004 AX_Bahnverkehrsanlage 53007 AX_Flugverkehrsanlage 53008 AX_EinrichtungenFuerDenSchiffsverkehr 53009 AX_BauwerkImGewaesserbereich

Object theme: Vegetation		
<a href="#">VEG01</a>	agricultural area	43001 AX_Landwirtschaft
<a href="#">VEG02</a>	forestry use	43002 AX_Wald
<a href="#">VEG03</a>	vegetation areas	43004 AX_Heide 43005 AX_Moor 43006 AX_Sumpf 43007 AX_UnlandVegetationsloseFlaeche
<a href="#">VEG04</a>	characteristic of vegetation	54001 AX_Vegetationsmerkmal

Object theme: Water bodies		
<a href="#">GEW01</a>	water bodies	44001 AX_Fliessgewaesser 44004 AX_Gewaesserachse 44005 AX_Hafenbecken 44006 AX_StehendesGewaesser 44007 AX_Meer  ZUSO: 44002 AX_Wasserlauf 44003 AX_Kanal
<a href="#">GEW02</a>	special characteristics of water bodies	55001 AX_Gewaessermerkmal
<a href="#">GEW03</a>	axis of water line	57003 AX_Gewaesserstationierungsachse

Object theme: Areas		
<a href="#">GEB01</a>	administrative areas	75003 AX_KommunalesGebiet 75004 AX_Gebiet_Nationalstaat 75005 AX_Gebiet_Bundesland 75006 AX_Gebiet_Regierungsbezirk 75007 AX_Gebiet_Kreis 75009 AX_Gebietsgrenze 75011 AX_Gebiet_Verwaltungsgemeinschaft  Incl. Attribute aus 73001 AX_Nationalstaat 73002 AX_Bundesland 73003 AX_Regierungsbezirk 73004 AX_KreisRegion 73005 AX_Gemeinde 73014 AX_Gemeindekennzeichen 73015 AX_Katalogeintrag 73025 AX_TeilVonVerwaltungsgemeinschaft
<a href="#">GEB02</a>	geographical areas	74001 AX_Landschaft 74004 AX_Insel
<a href="#">GEB03</a>	protected areas	71006 AX_NaturUmweltOderBodenschutzrecht 71011 AX_SonstigesRecht 71012 AX_Schutzzone  ZUSO: 71007 AX_SchutzgebietNachNaturUmweltOderBodenschutzrecht

Object theme: Relief		
<a href="#">REL01</a>	relief forms	61003 AX_DammWallDeich 61005 AX_Hoehleneingang 61008 AX_Hoehenlinie
<a href="#">REL02</a>	measurement data 3D	62030 AX_Strukturlinie3D  ZUSO: 61001 AX_BoeschungKliff

Object theme: Verical Relation		
<a href="#">HDU01</a>	relation	Referenzen HatDirektUnten

Description of the levels

**Theme Settlement**

**SIE01\_F**

<i>Field</i>	<i>Data type</i>	<i>Name</i>	<i>Applies to feature types</i>
LAND	Text(3)	landeskennung	52001 AX_Ortslage
MODELLART	Text(30)	modellartenkennung	
OBJART	Text(5)	objektart	
OBJART_TXT	Text(50)	objektartText	
OBJID	Text(16)	eindeutigerObjektidentifikator	
HDU_X	Short Integer(4)	hatDirektUntenExistiert	
BEGINN	Text(20)	lebenszeitintervallBeginnt	
ENDE	Text(20)	lebenszeitintervallEndet	
NAM	Text(180)	name	52001
RGS	Text(100)	regionalsprache	52001
BEMERKUNG <sup>3</sup>	Text(200)	bemerkung	52001

<sup>3</sup> Additional field, not part of AFIS-ALKIS-ATKIS-schema

**Theme Settlement**

**SIE01\_P**

<i>Field</i>	<i>Data type</i>	<i>Name</i>	<i>Applies to feature types</i>
LAND	Text(3)	landeskennung	52001 AX_Ortslage
MODELLART	Text(30)	modellartenkennung	
OBJART	Text(5)	objektart	
OBJART_TXT	Text(50)	objektartText	
OBJID	Text(16)	eindeutigerObjektidentifikator	
HDU_X	Short Integer(4)	hatDirektUntenExistiert	
BEGINN	Text(20)	lebenszeitintervallBeginnt	
ENDE	Text(20)	lebenszeitintervallEndet	
NAM	Text(180)	name	
RGS	Text(100)	regionalsprache	52001
BEMERKUNG <sup>3</sup>	Text(200)	bemerkung	52001

<sup>3</sup> Additional field, not part of AFIS-ALKIS-ATKIS-schema

**Theme Settlement**

**SIE02\_F**

<i>Field</i>	<i>Data type</i>	<i>Name</i>	<i>Applies to feature types</i>
LAND	Text(3)	landeskennung	41002 AX_IndustrieUndGewerbeflaeche
MODELLART	Text(30)	modellartenkennung	41003 AX_Halde
OBJART	Text(5)	objektart	41005 AX_TagebauGrubeSteinbruch
OBJART_TXT	Text(50)	objektartText	41007 AX_FlaecheBesondererFunktionalerPraegung
OBJID	Text(16)	eindeutigerObjektidentifikator	41008 AX_SportFreizeitUndErholungsflaeche
HDU_X	Short Integer(4)	hatDirektUntenExistiert	41009 AX_Friedhof
BEGINN	Text(20)	lebenszeitintervallBeginnt	41010 AX_Siedlungsflaeche
ENDE	Text(20)	lebenszeitintervallEndet	
AGT	Text(4)	abbaugut	41005
FKT	Text(4)	funktion	41002, 41007, 41008
NAM	Text(100)	name	41002, 41003, 41005, 41007, 41008, 41009, 41010
RGS	Text(100)	regionalsprache	41010
ZUS	Text(4)	zustand	41002, 41005
BEMERKUNG <sup>3</sup>	Text(200)	bemerkung	41002, 41003, 41005, 41007, 41008, 41009, 41010

<sup>1</sup> Supplement in contrast to AFIS-ALKIS-ATKIS-schema version 7.1.2

<i>Feature type</i>	<i>Label</i>	<i>Value</i>	<i>Identifier</i>	<i>Note</i>
41007	FKT	1150	health, cure	new attribute value
41008	FKT	4100	sports facility	new attribute value

<sup>3</sup> Additional field, not part of AFIS-ALKIS-ATKIS-schema

**Theme Settlement**

**SIE03\_F**

<i>Field</i>	<i>Data type</i>	<i>Name</i>	<i>Applies to feature types</i>	
LAND	Text(3)	landeskennung	51002 AX_BauwerkOderAnlage- FuerIndustrieUndGewerbe	
MODELLART	Text(30)	modellartenkennung		
OBJART	Text(5)	objektart		
OBJART_TXT	Text(50)	objektartText		
OBJID	Text(16)	eindeutigerObjektidentifikator		
HDU_X	Short Integer(4)	hatDirektUntenExistiert		
BEGINN	Text(20)	lebenszeitintervallBeginnt		
ENDE	Text(20)	lebenszeitintervallEndet		
BWF	Text(4)	bauwerksfunktion		51002
HHO	Float(6,1)	objekthoehe		51002
NAM	Text(100)	name	51002	
ZUS	Text(4)	zustand	51002	
BEMERKUNG <sup>3</sup>	Text(200)	bemerkung	51002	

<sup>3</sup> Additional field, not part of AFIS-ALKIS-ATKIS-schema

**Theme Settlement**

**SIE03\_L**

<i>Field</i>	<i>Data type</i>	<i>Name</i>	<i>Applies to feature types</i>	
LAND	Text(3)	landeskennung	51004 AX_Transportanlage 51005 AX_Leitung	
MODELLART	Text(30)	modellartenkennung		
OBJART	Text(5)	objektart		
OBJART_TXT	Text(50)	objektartText		
OBJID	Text(16)	eindeutigerObjektidentifikator		
HDU_X	Short Integer(4)	hatDirektUntenExistiert		
BEGINN	Text(20)	lebenszeitintervallBeginnt		
ENDE	Text(20)	lebenszeitintervallEndet		
BWF	Text(4)	bauwerksfunktion		51004, 51005
PRO	Text(4)	produkt		51004 <sup>2</sup>
BEMERKUNG <sup>3</sup>	Text(200)	bemerkung	51004, 51005	

<sup>2</sup> Cancellation in contrast to AFIS-ALKIS-ATKIS-schema version 7.1.2

<i>Feature type</i>	<i>Label</i>	<i>Value</i>	<i>Identifier</i>	<i>Note</i>
51004	PRO			deleted attribute

<sup>3</sup> Additional field, not part of AFIS-ALKIS-ATKIS-schema



**Theme Settlement**

**SIE03\_P**

<i>Field</i>	<i>Data type</i>	<i>Name</i>	<i>Applies to feature types</i>
LAND	Text(3)	landeskennung	51002 AX_BauwerkOderAnlage- FuerIndustrieUndGewerbe 51006 AX_BauwerkOderAnlage- FuerSportFreizeitUndErholung 51007 AX_HistorischesBauwerkOder- HistorischeEinrichtung 51009 AX_SonstigesBauwerk- OderSonstigeEinrichtung
MODELLART	Text(30)	modellartenkennung	
OBJART	Text(5)	objektart	
OBJART_TXT	Text(50)	objektartText	
OBJID	Text(16)	eindeutigerObjektidentifikator	
HDU_X	Short Integer(4)	hatDirektUntenExistiert	
BEGINN	Text(20)	lebenszeitintervallBeginnt	
ENDE	Text(20)	lebenszeitintervallEndet	
ATP	Text(4)	archeologischerTyp	
BWF	Text(4)	bauwerksfunktion	51002, 51006, 51009
HHO	Float(6,1)	objekthoehe	51002, 51007, 51009
NAM	Text(100)	name	51002, 51006, 51007, 51009
SPO	Text(4)	sportart	51006
ZUS	Text(4)	zustand	51002, 51006
BEMERKUNG <sup>3</sup>	Text(200)	bemerkung	51002, 51006, 51007, 51009

<sup>3</sup> Additional field, not part of AFIS-ALKIS-ATKIS-schema

**Theme Settlement**

**SIE04\_F**

<i>Field</i>	<i>Data type</i>	<i>Name</i>	<i>Applies to feature types</i>
LAND	Text(3)	landeskennung	52002 AX_Hafen
MODELLART	Text(30)	modellartenkennung	52005 AX_Testgelaende
OBJART	Text(5)	objektart	
OBJART_TXT	Text(50)	objektartText	
OBJID	Text(16)	eindeutigerObjektidentifikator	
HDU_X	Short Integer(4)	hatDirektUntenExistiert	
BEGINN	Text(20)	lebenszeitintervallBeginnt	
ENDE	Text(20)	lebenszeitintervallEndet	
NAM	Text(100)	name	52002, 52005
BEMERKUNG <sup>3</sup>	Text(200)	bemerkung	52002, 52005

<sup>3</sup> Additional field, not part of AFIS-ALKIS-ATKIS-schema

**Theme Settlement**

**SIE04\_L**

<i>Field</i>	<i>Data type</i>	<i>Name</i>	<i>Applies to feature types</i>
LAND	Text(3)	landeskennung	52003 AX_Schleuse
MODELLART	Text(30)	modellartenkennung	
OBJART	Text(5)	objektart	
OBJART_TXT	Text(50)	objektartText	
OBJID	Text(16)	eindeutigerObjektidentifikator	
HDU_X	Short Integer(4)	hatDirektUntenExistiert	
BEGINN	Text(20)	lebenszeitintervallBeginnt	
ENDE	Text(20)	lebenszeitintervallEndet	
KON	Text(4)	konstruktionsmerkmalBauart	
NAM	Text(100)	name	52003
ZUS	Text(4)	zustand	52003
BEMERKUNG <sup>3</sup>	Text(200)	bemerkung	52003

<sup>3</sup> Additional field, not part of AFIS-ALKIS-ATKIS-schema

**Theme Settlement**

**SIE04\_P**

<i>Field</i>	<i>Data type</i>	<i>Name</i>	<i>Applies to feature types</i>
LAND	Text(3)	landeskennung	52003 AX_Schleuse
MODELLART	Text(30)	modellartenkennung	
OBJART	Text(5)	objektart	
OBJART_TXT	Text(50)	objektartText	
OBJID	Text(16)	eindeutigerObjektidentifikator	
HDU_X	Short Integer(4)	hatDirektUntenExistiert	
BEGINN	Text(20)	lebenszeitintervallBeginnt	
ENDE	Text(20)	lebenszeitintervallEndet	
KON	Text(4)	konstruktionsmerkmalBauart	
NAM	Text(100)	name	52003
ZUS	Text(4)	zustand	52003
BEMERKUNG <sup>3</sup>	Text(200)	bemerkung	52003

<sup>3</sup> Additional field, not part of AFIS-ALKIS-ATKIS-schema

**Theme Settlement**

**SIE05\_P**

<i>Field</i>	<i>Data type</i>	<i>Name</i>	<i>Applies to feature types</i>
LAND	Text(3)	landeskennung	31001 AX_Gebaeude 51001 AX_Turm
MODELLART	Text(30)	modellartenkennung	
OBJART	Text(5)	objektart	
OBJART_TXT	Text(50)	objektartText	
OBJID	Text(16)	eindeutigerObjektidentifikator	
HDU_X	Short Integer(4)	hatDirektUntenExistiert	
BEGINN	Text(20)	lebenszeitintervallBeginnt	
ENDE	Text(20)	lebenszeitintervallEndet	
BWF	Text(20)	bauwerksfunktion	
GFK	Text(4)	gebaeudedefunktion	31001
HHO	Float(6,1)	objekthoehe	31001, 51001
NAM	Text(200)	name	31001, 51001
ZNM	Text(100)	zweitname	31001
ZUS	Text(4)	zustand	31001, 51001
BEMERKUNG <sup>3</sup>	Text(200)	bemerkung	31001, 51001

<sup>1</sup> Supplement in contrast to AFIS-ALKIS-ATKIS-schema version 7.1.2

<i>Feature type</i>	<i>Label</i>	<i>Value</i>	<i>Identifier</i>	<i>Note</i>
31001	ZUS	2100	out of operation, closed, abandoned	new attribute value

<sup>3</sup> Additional field, not part of AFIS-ALKIS-ATKIS-schema

**Theme Traffic**

**VER01\_L**

Via the relation *istTeilVon* the objects of REOs *AX\_Strassenachse* (42003) refer to the ZUSOs of the feature type *AX\_Strasse* (42002). The concrete attribution is defined by the attributes *OBJART\_Z* and *OBJID\_Z*. The attributes of the ZUSO are attached to all related REOs.

<i>Field</i>	<i>Data type</i>	<i>Name</i>	<i>Applies to feature types</i>
LAND	Text(3)	landeskennung	42003 AX_Strassenachse
MODELLART	Text(30)	modellartenkennung	
OBJART	Text(5)	objektart	
OBJART_TXT	Text(50)	objektartText	
OBJID	Text(16)	eindeutigerObjektidentifikator	
HDU_X	Short Integer(4)	hatDirektUntenExistiert	
BEGINN	Text(20)	lebenszeitintervallBeginnt	
ENDE	Text(20)	lebenszeitintervallEndet	
OBJART_Z	Text(5)	Objektart des ZUSO	42003 (istTeilVon 42002 AX_Strasse)
OBJID_Z	Text(16)	Objekt-ID des ZUSO	42003 (istTeilVon 42002 AX_Strasse)
BEZ	Text(30)	bezeichnung	42003
BRF	Float(6,1)	breiteDerFahrbahn	42003
BVB	Text(4)	besondereVerkehrsbedeutung	42003
FSZ	Long Integer(5)	anzahlDerFahrstreifen	42003
FTR	Text(4)	fahrbahntrennung	42003
IBD	Text(4)	internationaleBedeutung	42003
WDM	Text(4)	widmung	42003
ZNM	Text(200)	zweitname	42003
ZUS	Text(4)	zustand	42003
BEMERKUNG <sup>3</sup>	Text(200)	bemerkung	42003

<sup>3</sup> Additional field, not part of AFIS-ALKIS-ATKIS-schema

**Theme Traffic**

**VER02\_L**

<i>Field</i>	<i>Data type</i>	<i>Name</i>	<i>Applies to feature types</i>
LAND	Text(3)	landeskennung	42008 AX_Fahrwegachse
MODELLART	Text(30)	modellartenkennung	53003 AX_WegPfadSteig
OBJART	Text(5)	objektart	
OBJART_TXT	Text(50)	objektartText	
OBJID	Text(16)	eindeutigerObjektidentifikator	
HDU_X	Short Integer(4)	hatDirektUntenExistiert	
BEGINN	Text(20)	lebenszeitintervallBeginnt	
ENDE	Text(20)	lebenszeitintervallEndet	
FKT	Text(4)	funktion	42008
NAM	Text(100)	name	53003
ZNM	Text(100)	zweitname	42008
BEMERKUNG <sup>3</sup>	Text(200)	bemerkung	42008, 53003

<sup>3</sup> Additional field, not part of AFIS-ALKIS-ATKIS-schema

**Theme Traffic**

**VER03\_F**

<i>Field</i>	<i>Data type</i>	<i>Name</i>	<i>Applies to feature types</i>
LAND	Text(3)	landeskennung	42010 AX_Bahnverkehr
MODELLART	Text(30)	modellartenkennung	
OBJART	Text(5)	objektart	
OBJART_TXT	Text(50)	objektartText	
OBJID	Text(16)	eindeutigerObjektidentifikator	
HDU_X	Short Integer(4)	hatDirektUntenExistiert	
BEGINN	Text(20)	lebenszeitintervallBeginnt	
ENDE	Text(20)	lebenszeitintervallEndet	
BEMERKUNG <sup>3</sup>	Text(200)	bemerkung	

<sup>3</sup> Additional field, not part of AFIS-ALKIS-ATKIS-schema



**Theme Traffic**

**VER03\_L**

<i>Field</i>	<i>Data type</i>	<i>Name</i>	<i>Applies to feature types</i>
LAND	Text(3)	landeskennung	42014 AX_Bahnstrecke 53005 AX_SeilbahnSchwebebahn
MODELLART	Text(30)	modellartenkennung	
OBJART	Text(5)	objektart	
OBJART_TXT	Text(50)	objektartText	
OBJID	Text(16)	eindeutigerObjektidentifikator	
HDU_X	Short Integer(4)	hatDirektUntenExistiert	
BEGINN	Text(20)	lebenszeitintervallBeginnt	
ENDE	Text(20)	lebenszeitintervallEndet	
BKT	Text(20)	bahnkategorie	
ELK	Text(4)	elektrifizierung	42014
GLS	Text(4)	anzahlDerStreckengleise	42014
NAM	Text(100)	name	53005
NRB	Text(60)	nummerDerBahnstrecke	42014
SPW	Text(4)	spurweite	42014
VKD	Text(4)	verkehrsdienst	42014
ZNM	Text(100)	zweitname	42014
ZUS	Text(4)	zustand	42014
BEMERKUNG <sup>3</sup>	Text(200)	bemerkung	42014, 53005

<sup>3</sup> Additional field, not part of AFIS-ALKIS-ATKIS-schema

**Theme Traffic**

**VER04\_F**

<i>Field</i>	<i>Data type</i>	<i>Name</i>	<i>Applies to feature types</i>
LAND	Text(3)	landeskennung	42015 AX_Flugverkehr
MODELLART	Text(30)	modellartenkennung	
OBJART	Text(5)	objektart	
OBJART_TXT	Text(50)	objektartText	
OBJID	Text(16)	eindeutigerObjektidentifikator	
HDU_X	Short Integer(4)	hatDirektUntenExistiert	
BEGINN	Text(20)	lebenszeitintervallBeginnt	
ENDE	Text(20)	lebenszeitintervallEndet	
ART	Text(4)	art	
BEZ	Text(60)	bezeichnung	42015
NAM	Text(100)	name	42015
NTZ	Text(4)	nutzung	42015
ZNM	Text(100)	zweitname	42015
ZUS	Text(4)	zustand	42015
BEMERKUNG <sup>3</sup>	Text(200)	bemerkung	42015

<sup>3</sup> Additional field, not part of AFIS-ALKIS-ATKIS-schema

**Theme Traffic**

**VER05\_L**

<i>Field</i>	<i>Data type</i>	<i>Name</i>	<i>Applies to feature types</i>
LAND	Text(3)	landeskennung	57002 AX_SchiffahrtslinieFaehrverkehr
MODELLART	Text(30)	modellartenkennung	
OBJART	Text(5)	objektart	
OBJART_TXT	Text(50)	objektartText	
OBJID	Text(16)	eindeutigerObjektidentifikator	
HDU_X	Short Integer(4)	hatDirektUntenExistiert	
BEGINN	Text(20)	lebenszeitintervallBeginnt	
ENDE	Text(20)	lebenszeitintervallEndet	
ART	Text(20)	art	
NAM	Text(100)	name	57002
BEMERKUNG <sup>3</sup>	Text(200)	bemerkung	57002

<sup>3</sup> Additional field, not part of AFIS-ALKIS-ATKIS-schema

**Theme Traffic**

**VER06\_F**

<i>Field</i>	<i>Data type</i>	<i>Name</i>	<i>Applies to feature types</i>
LAND	Text(3)	landeskennung	53001 AX_BauwerkImVerkehrsbereich
MODELLART	Text(30)	modellartenkennung	53009 AX_BauwerkImGewaesserbereich
OBJART	Text(5)	objektart	
OBJART_TXT	Text(50)	objektartText	
OBJID	Text(16)	eindeutigerObjektidentifikator	
HDU_X	Short Integer(4)	hatDirektUntenExistiert	
BEGINN	Text(20)	lebenszeitintervallBeginnt	
ENDE	Text(20)	lebenszeitintervallEndet	
BWF	Text(4)	bauwerksfunktion	53001, 53009
NAM	Text(100)	name	53001, 53009
RGS	Text(100)	regionalsprache	53009
ZUS	Text(4)	zustand	53001, 53009
BEMERKUNG <sup>3</sup>	Text(200)	bemerkung	53001, 53009

<sup>3</sup> Additional field, not part of AFIS-ALKIS-ATKIS-schema

**Theme Traffic**

**VER06\_L**

<i>Field</i>	<i>Data type</i>	<i>Name</i>	<i>Applies to feature types</i>
LAND	Text(3)	landeskennung	53001 AX_BauwerkImVerkehrsbereich
MODELLART	Text(30)	modellartenkennung	53007 AX_Flugverkehrsanlage
OBJART	Text(5)	objektart	53009 AX_BauwerkImGewaesserbereich
OBJART_TXT	Text(50)	objektartText	
OBJID	Text(16)	eindeutigerObjektidentifikator	
HDU_X	Short Integer(4)	hatDirektUntenExistiert	
BEGINN	Text(20)	lebenszeitintervallBeginnt	
ENDE	Text(20)	lebenszeitintervallEndet	
ART	Text(4)	art	53007
BEZ	Text(60)	bezeichnung	53007
BRO	Float(6,1)	breiteDesObjekts	53007
BWF	Text(4)	bauwerksfunktion	53001, 53009
NAM	Text(100)	name	53001, 53007, 53009
RGS	Text(100)	regionalsprache	53009
OFM	Text(4)	oberflaechenmaterial	53007
ZNM	Text(100)	zweitname	53007
ZUS	Text(4)	zustand	53001, 53007, 53009
BEMERKUNG <sup>3</sup>	Text(200)	bemerkung	53001, 53007, 53009

<sup>3</sup> Additional field, not part of AFIS-ALKIS-ATKIS-schema

**Theme Traffic**

**VER06\_P**

<i>Field</i>	<i>Data type</i>	<i>Name</i>	<i>Applies to feature types</i>
LAND	Text(3)	landeskennung	53002 AX_Strossenverkehrsanlage
MODELLART	Text(30)	modellartenkennung	53004 AX_Bahnverkehrsanlage
OBJART	Text(5)	objektart	53007 AX_Flugverkehrsanlage
OBJART_TXT	Text(50)	objektartText	53008 AX_EinrichtungenFuerDenSchiffsverkehr
OBJID	Text(16)	eindeutigerObjektidentifikator	53009 AX_BauwerkImGewaesserbereich
HDU_X	Short Integer(4)	hatDirektUntenExistiert	
BEGINN	Text(20)	lebenszeitintervallBeginnt	
ENDE	Text(20)	lebenszeitintervallEndet	
ART	Text(4)	art	53002, 53007, 53008
BEZ	Text(60)	bezeichnung	53002, 53004, 53007, 53008
BFK	Text(4)	bahnhofskategorie	53004
BKT	Text(20)	bahnkategorie	53004
BRO	Float(6,1)	breiteDesObjekts	53007
BWF	Text(4)	bauwerksfunktion	53009
NAM	Text(100)	name	53002, 53004, 53007, 53008, 53009
OFM	Text(4)	oberflaechenmaterial	53007
RGS	Text(100)	regionalsprache	53009
VKD	Text(4)	verkehrsdienst	53004
ZNM	Text(100)	zweitname	53007
ZUS	Text(4)	zustand	53004, 53007, 53008, 53009
BEMERKUNG <sup>3</sup>	Text(200)	bemerkung	53002, 53004, 53007, 53008, 53009

<sup>3</sup> Additional field, not part of AFIS-ALKIS-ATKIS-schema

**Theme Vegetation**

**VEG01\_F**

<i>Field</i>	<i>Data type</i>	<i>Name</i>	<i>Applies to feature types</i>
LAND	Text(3)	landeskennung	43001 AX_Landwirtschaft
MODELLART	Text(30)	modellartenkennung	
OBJART	Text(5)	objektart	
OBJART_TXT	Text(50)	objektartText	
OBJID	Text(16)	eindeutigerObjektidentifikator	
HDU_X	Short Integer(4)	hatDirektUntenExistiert	
BEGINN	Text(20)	lebenszeitintervallBeginnt	
ENDE	Text(20)	lebenszeitintervallEndet	
NAM	Text(100)	name	
VEG	Text(4)	vegetationsmerkmal	43001
BEMERKUNG <sup>3</sup>	Text(200)	bemerkung	43001

<sup>3</sup> Additional field, not part of AFIS-ALKIS-ATKIS-schema

**Theme Vegetation**

**VEG02\_F**

<i>Field</i>	<i>Data type</i>	<i>Name</i>	<i>Applies to feature types</i>
LAND	Text(3)	landeskennung	43002 AX_Wald
MODELLART	Text(30)	modellartenkennung	
OBJART	Text(5)	objektart	
OBJART_TXT	Text(50)	objektartText	
OBJID	Text(16)	eindeutigerObjektidentifikator	
HDU_X	Short Integer(4)	hatDirektUntenExistiert	
BEGINN	Text(20)	lebenszeitintervallBeginnt	
ENDE	Text(20)	lebenszeitintervallEndet	
NAM	Text(100)	name	
NTZ	Text(4)	nutzung	43002
RGS	Text(100)	regionalsprache	43002
BEMERKUNG <sup>3</sup>	Text(200)	bemerkung	43002

<sup>3</sup> Additional field, not part of AFIS-ALKIS-ATKIS-schema



**Theme Vegetation**

**VEG03\_F**

<i>Field</i>	<i>Data type</i>	<i>Name</i>	<i>Applies to feature types</i>
LAND	Text(3)	landeskennung	43004 AX_Heide
MODELLART	Text(30)	modellartenkennung	43005 AX_Moor
OBJART	Text(5)	objektart	43006 AX_Sumpf
OBJART_TXT	Text(50)	objektartText	43007 AX_UnlandVegetationsloseFlaeche
OBJID	Text(16)	eindeutigerObjektidentifikator	
HDU_X	Short Integer(4)	hatDirektUntenExistiert	
BEGINN	Text(20)	lebenszeitintervallBeginnt	
ENDE	Text(20)	lebenszeitintervallEndet	
FKT	Text(4)	funktion	43007
NAM	Text(100)	name	43004, 43005, 43006, 43007
OFM	Text(4)	oberflaechenmaterial	43007
BEMERKUNG <sup>3</sup>	Text(200)	bemerkung	43004, 43005, 43006, 43007

<sup>3</sup> Additional field, not part of AFIS-ALKIS-ATKIS-schema

**Theme Vegetation**

**VEG04\_F**

<i>Field</i>	<i>Data type</i>	<i>Name</i>	<i>Applies to feature types</i>
LAND	Text(3)	landeskennung	54001 AX_Vegetationsmerkmal
MODELLART	Text(30)	modellartenkennung	
OBJART	Text(5)	objektart	
OBJART_TXT	Text(50)	objektartText	
OBJID	Text(16)	eindeutigerObjektidentifikator	
HDU_X	Short Integer(4)	hatDirektUntenExistiert	
BEGINN	Text(20)	lebenszeitintervallBeginnt	
ENDE	Text(20)	lebenszeitintervallEndet	
BWS	Text(4)	bewuchs	
NAM	Text(100)	name	54001
ZUS	Text(4)	zustand	54001
BEMERKUNG <sup>3</sup>	Text(200)	bemerkung	54001

<sup>3</sup> Additional field, not part of AFIS-ALKIS-ATKIS-schema

**Theme Water bodies**

**GEW01\_F**

Via the relation *istTeilVon* the objects of REOs *AX\_Fliessgewaesser* (44001) refer to the ZUSOs of the feature type *AX\_Wasserlauf* (44002) or *AX\_Kanal* (44003). The concrete attribution is defined by the attributes *OBJART\_Z* and *OBJID\_Z*. The attributes of the ZUSO are attached to all related REOs.

<b>Field</b>	<b>Data type</b>	<b>Name</b>	<b>Applies to feature types</b>
LAND	Text(3)	landeskennung	44001 AX_Fliessgewaesser 44005 AX_Hafenbecken 44006 AX_StehendesGewaesser 44007 AX_Meer
MODELLART	Text(30)	modellartenkennung	
OBJART	Text(5)	objektart	
OBJART_TXT	Text(50)	objektartText	
OBJID	Text(16)	eindeutigerObjektidentifikator	
HDU_X	Short Integer(4)	hatDirektUntenExistiert	
BEGINN	Text(20)	lebenszeitintervallBeginnt	
ENDE	Text(20)	lebenszeitintervallEndet	
OBJART_Z	Text(5)	Objektart des ZUSO	
OBJID_Z	Text(16)	Objekt-ID des ZUSO	44001 (istTeilVon 44002 / 44003)
FKT	Text(4)	funktion	44001, 44006
GWK	Text(20)	gewaesserkennzahl	44001
HYD	Text(4)	hydrologischesMerkmal	44001, 44006
NAM	Text(100)	name	44001, 44005, 44006, 44007
RGS	Text(100)	regionalsprache	44001, 44006, 44007
SFK	Text(4)	schiffahrtskategorie	44001, 44006
SKZ	Text(20)	seekennzahl	44006
WDM	Text(4)	widmung	44001, 44006
WSG	Float(6,1)	wasserspiegelhoeheInStehendemGewaesser	44006
ZNM	Text(100)	zweitname	44001, 44006, 44007
ZUS	Text(4)	zustand	44001
BEMERKUNG <sup>3</sup>	Text(200)	bemerkung	44001, 44005, 44006, 44007

<sup>3</sup> Additional field, not part of AFIS-ALKIS-ATKIS-schema

**Theme Water bodies**

**GEW01\_L**

Via the relation *istTeilVon* the objects of REOs *AX\_Gewaesserachse* (44004) refer to the ZUSOs of the feature type *AX\_Wasserlauf* (44002) or *AX\_Kanal* (44003). The concrete attribution is defined by the attributes *OBJART\_Z* and *OBJID\_Z*. The attributes of the ZUSO are attached to all related REOs.

<b>Field</b>	<b>Data type</b>	<b>Name</b>	<b>Applies to feature types</b>
LAND	Text(3)	landeskennung	44004 AX_Gewaesserachse
MODELLART	Text(30)	modellartenkennung	
OBJART	Text(5)	objektart	
OBJART_TXT	Text(50)	objektartText	
OBJID	Text(16)	eindeutigerObjektidentifikator	
HDU_X	Short Integer(4)	hatDirektUntenExistiert	
BEGINN	Text(20)	lebenszeitintervallBeginnt	
ENDE	Text(20)	lebenszeitintervallEndet	
OBJART_Z	Text(5)	Objektart des ZUSO	
OBJID_Z	Text(16)	Objekt-ID des ZUSO	44004 (istTeilVon 44002 / 44003)
BRG	Short integer(2)	breiteDesGewaessers	44004
FKT	Text(4)	funktion	44004
FLR	Short integer(1)	fliessrichtung	44004
GWK	Text(20)	gewaesserkennzahl	44004
HYD	Text(4)	hydrologischesMerkmal	44004
NAM	Text(100)	name	44004
RGS	Text(100)	regionalsprache	44004
SFK	Text(4)	schiffahrtkategorie	44004
WDM	Text(4)	widmung	44004
ZNM	Text(100)	zweitname	44004
ZUS	Text(4)	zustand	44004

**Digital Landscape Model 1:250 000**  
DLM250

BEMERKUNG <sup>3</sup>	Text(200)	bemerkung	44004
------------------------	-----------	-----------	-------

<sup>3</sup> Additional field, not part of AFIS-ALKIS-ATKIS-schema

**Theme Water bodies**

**GEW02\_F**

<i>Field</i>	<i>Data type</i>	<i>Name</i>	<i>Applies to feature types</i>
LAND	Text(3)	landeskennung	55001 AX_Gewaessermerkmal
MODELLART	Text(30)	modellartenkennung	
OBJART	Text(5)	objektart	
OBJART_TXT	Text(50)	objektartText	
OBJID	Text(16)	eindeutigerObjektidentifikator	
HDU_X	Short Integer(4)	hatDirektUntenExistiert	
BEGINN	Text(20)	lebenszeitintervallBeginnt	
ENDE	Text(20)	lebenszeitintervallEndet	
ART	Text(4)	art	55001
NAM	Text(100)	name	55001
RGS	Text(100)	regionalsprache	55001
ZNM	Text(100)	zweitname	55001
BEMERKUNG <sup>3</sup>	Text(200)	bemerkung	55001

<sup>3</sup> Additional field, not part of AFIS-ALKIS-ATKIS-schema

**Theme Water bodies**

**GEW02\_P**

<i>Field</i>	<i>Data type</i>	<i>Name</i>	<i>Applies to feature types</i>
LAND	Text(3)	landeskennung	55001 AX_Gewaessermerkmal
MODELLART	Text(30)	modellartenkennung	
OBJART	Text(5)	objektart	
OBJART_TXT	Text(50)	objektartText	
OBJID	Text(16)	eindeutigerObjektidentifikator	
HDU_X	Short Integer(4)	hatDirektUntenExistiert	
BEGINN	Text(20)	lebenszeitintervallBeginnt	
ENDE	Text(20)	lebenszeitintervallEndet	
ART	Text(4)	art	
NAM	Text(100)	name	55001
RGS	Text(100)	regionalsprache	55001
ZNM	Text(100)	zweitname	55001
BEMERKUNG <sup>3</sup>	Text(200)	bemerkung	55001

<sup>3</sup> Additional field, not part of AFIS-ALKIS-ATKIS-schema



**Theme Water bodies**

**GEW03\_L**

<i>Field</i>	<i>Data type</i>	<i>Name</i>	<i>Applies to feature types</i>
LAND	Text(3)	landeskennung	57003 AX_Gewaesserstationierungsachse
MODELLART	Text(30)	modellartenkennung	
OBJART	Text(5)	objektart	
OBJART_TXT	Text(50)	objektartText	
OBJID	Text(16)	eindeutigerObjektidentifikator	
HDU_X	Short Integer(4)	hatDirektUntenExistiert	
BEGINN	Text(20)	lebenszeitintervallBeginnt	
ENDE	Text(20)	lebenszeitintervallEndet	
AGA	Text(4)	artDerGewaesserachse	57003
FLR	Short Integer(1)	fliesrichtung	57003
GWK	Text(30)	gewaesserkennzahl	57003
NAM	Text(100)	name	57003
RGS	Text(100)	regionalsprache	57003
SFK	Text(4)	schifffahrtskategorie	57003
ZNM	Text(100)	zweitname	57003
BEMERKUNG <sup>3</sup>	Text(200)	bemerkung	57003

<sup>3</sup> additional field, not part of AFIS-ALKIS-ATKIS-schema

## **Theme Areas**

### **GEB01\_F**

The attributes *name*, *key* and *administrative function* from the object group *catalogues* are added to the objects of the administrative areal units.

<b>Field</b>	<b>Data type</b>	<b>Name</b>	<b>Applies to feature types</b>
LAND	Text(3)	landeskennung	75003 AX_KommunalesGebiet
MODELLART	Text(30)	modellartenkennung	75004 AX_Gebiet_Nationalstaat
OBJART	Text(5)	objektart	75005 AX_Gebiet_Bundesland
OBJART_TXT	Text(50)	objektartText	75006 AX_Gebiet_Regierungsbezirk
OBJID	Text(16)	eindeutigerObjektidentifikator	75007 AX_Gebiet_Kreis
HDU_X	Short Integer(4)	hatDirektUntenExistiert	75011 AX_Gebiet_Verwaltungsgemeinschaft
BEGINN	Text(20)	lebenszeitintervallBeginnt	
ENDE	Text(20)	lebenszeitintervallEndet	
ADF	Text(20)	administrativeFunktion	75003, 75004, 75005, 75006, 75007, 75011
BEZ_NAT	Text(60)	bezeichnungNationalstaat	75003, 75004, 75005, 75006, 75007, 75011
BEZ_LAN	Text(60)	bezeichnungLand	75003, 75005, 75006, 75007, 75011
BEZ_RBZ	Text(60)	bezeichnungRegierungsbezirk	75003, 75006, 75007, 75011
BEZ_KRS	Text(60)	bezeichnungKreis	75003, 75007, 75011
BEZ_VWG	Text(60)	bezeichnungVerwaltungsgemeinschaft	75003, 75011
BEZ_GEM	Text(60)	bezeichnungGemeinde	75003
RGS	Text(100)	regionalsprache	75003, 75004, 75005, 75006, 75007, 75011
SCH	Text(20)	schluesselGesamt	75003, 75004, 75005, 75006, 75007, 75011
BEMERKUNG <sup>3</sup>	Text(200)	bemerkung	75003, 75004, 75005, 75006, 75007, 75011

<sup>3</sup> **Additional field, not part of GeoInfoDok**

**Theme Areas**

**GEB01\_L**

<i>Feature type</i>	<i>Label</i>	<i>Value</i>	<i>Identifier</i>
LAND	Text(3)	landeskennung	75009 AX_Gebietsgrenze
MODELLART	Text(30)	modellartenkennung	
OBJART	Text(5)	objektart	
OBJART_TXT	Text(50)	objektartText	
OBJID	Text(16)	eindeutigerObjektidentifikator	
HDU_X	Short Integer(4)	hatDirektUntenExistiert	
BEGINN	Text(20)	lebenszeitintervallBeginnt	
ENDE	Text(20)	lebenszeitintervallEndet	
AGZ	Text(30)	artDerGebietsgrenze	
ZUS	Text(4)	zustand	75009 <sup>1</sup>
BEMERKUNG <sup>3</sup>	Text(200)	bemerkung	75009

<sup>3</sup> Additional field, not part of GeolInfoDok

**Theme Areas**

**GEB02\_F**

<i>Field</i>	<i>Data type</i>	<i>Name</i>	<i>Applies to feature types</i>
LAND	Text(3)	landeskennung	74001 AX_Landschaft
MODELLART	Text(30)	modellartenkennung	74004 AX_Insel
OBJART	Text(5)	objektart	
OBJART_TXT	Text(50)	objektartText	
OBJID	Text(16)	eindeutigerObjektidentifikator	
HDU_X	Short Integer(4)	hatDirektUntenExistiert	
BEGINN	Text(20)	lebenszeitintervallBeginnt	
ENDE	Text(20)	lebenszeitintervallEndet	
LTP	Text(4)	landschaftstyp	74001
NAM	Text(100)	name	74001, 74004
RGS	Text(100)	regionalsprache	74001, 74004
BEMERKUNG <sup>3</sup>	Text(200)	bemerkung	74001, 74004

<sup>3</sup> Additional field, not part of GeolInfoDok

## Theme Areas

### GEB03\_F

Via the relation *istTeilVon* the objects of REOs *AX\_Schutzzone* (71012) refer to the ZUSOs of the feature type *AX\_SchutzgebietNachNaturUmweltOderBodenschutzrecht* (71007). The concrete attribution is defined by the attributes *OBJART\_Z* and *OBJID\_Z*. The attributes of the ZUSO are attached to all related REOs.

<i>Field</i>	<i>Data type</i>	<i>Name</i>	<i>Applies to feature types</i>
LAND	Text(3)	landeskennung	71006 AX_NaturUmweltOderBodenschutzrecht
MODELLART	Text(30)	modellartenkennung	71011 AX_SonstigesRecht
OBJART	Text(5)	objektart	71012 AX_Schutzzone
OBJART_TXT	Text(50)	objektartText	
OBJID	Text(16)	eindeutigerObjektidentifikator	
HDU_X	Short Integer(4)	hatDirektUntenExistiert	
BEGINN	Text(20)	lebenszeitintervallBeginnt	
ENDE	Text(20)	lebenszeitintervallEndet	
OBJART_Z	Text(5)	Objektart des ZUSO	71012 (istTeilVon 71007)
OBJID_Z	Text(16)	Objekt-ID des ZUSO	71012 (istTeilVon 71007)
ADF	Text(4)	artDerFestlegung	71006, 71011, 71012
BEZ	Text(60)	bezeichnung	71006
NAM	Text(180)	name	71006, 71011, 71012
SGN	Text(20)	nummerDesSchutzgebietes	71012
ZON	Text(4)	zone	<del>71012</del> <sup>2</sup>
BEMERKUNG <sup>3</sup>	Text(200)	bemerkung	71006, 71011, 71012

### <sup>2</sup> Cancellation in contrast to AFIS-ALKIS-ATKIS-schema version 7.1.2

<i>Feature type</i>	<i>Label</i>	<i>Value</i>	<i>Identifier</i>	<i>Note</i>
71012	ZON	1010 1020 1030 1060 1070 1080	zone I zone II zone III core zone care zone development zone	deleted attribute deleted attribute value deleted attribute value deleted attribute value deleted attribute value deleted attribute value deleted attribute value

### <sup>3</sup> Additional field, not part of GeoInfoDok

**Theme Relief**

**REL01\_L**

<i>Field</i>	<i>Data type</i>	<i>Name</i>	<i>Applies to feature types</i>
LAND	Text(3)	landeskennung	61003 AX_DammWallDeich
MODELLART	Text(30)	modellartenkennung	61008 AX_Hoehenlinie
OBJART	Text(5)	objektart	
OBJART_TXT	Text(50)	objektartText	
OBJID	Text(16)	eindeutigerObjektidentifikator	
HDU_X	Short Integer(4)	hatDirektUntenExistiert	
BEGINN	Text(20)	lebenszeitintervallBeginnt	
ENDE	Text(20)	lebenszeitintervallEndet	
FKT	Text(4)	funktion	61003
HHL	Float(8,2)	hoeheVonHoehenlinie	61008
HHO	Float(6,1)	objekthoehe	61003
NAM	Text(100)	name	61003
BEMERKUNG <sup>3</sup>	Text(200)	bemerkung	61003, 61008

<sup>3</sup> Additional field, not part of GeolInfoDok

**Theme Relief**

**REL01\_P**

<i>Field</i>	<i>Data type</i>	<i>Name</i>	<i>Applies to feature types</i>
LAND	Text(3)	landeskennung	61005 AX_Hoehleneingang
MODELLART	Text(30)	modellartenkennung	
OBJART	Text(5)	objektart	
OBJART_TXT	Text(50)	objektartText	
OBJID	Text(16)	eindeutigerObjektidentifikator	
HDU_X	Short Integer(4)	hatDirektUntenExistiert	
BEGINN	Text(20)	lebenszeitintervallBeginnt	
ENDE	Text(20)	lebenszeitintervallEndet	
NAM	Text(100)	name	
ZNM	Text(100)	zweitname	61005
BEMERKUNG <sup>3</sup>	Text(200)	bemerkung	61005

<sup>3</sup> Additional field, not part of GeolInfoDok

**Theme Relief**

**REL02\_P**

<i>Field</i>	<i>Data type</i>	<i>Name</i>	<i>Applies to feature types</i>
LAND	Text(3)	landeskennung	62020 AX_Punkt3D
MODELLART	Text(30)	modellartenkennung	
OBJART	Text(5)	objektart	
OBJART_TXT	Text(50)	objektartText	
OBJID	Text(16)	eindeutigerObjektidentifikator	
HDU_X	Short Integer(4)	hatDirektUntenExistiert	
BEGINN	Text(20)	lebenszeitintervallBeginnt	
ENDE	Text(20)	lebenszeitintervallEndet	
ART	Text(4)	artDesPunkt3D	
HOEHE <sup>3</sup>	Float(6,1)	hoehe	62020
BEMERKUNG <sup>3</sup>	Text(200)	bemerkung	62020

<sup>3</sup> Additional field, not part of GeolInfoDok



**Theme Relief**

**REL02\_L**

Via the relation *istTeilVon* the objects of REOs *AX\_Strukturlinie3D* (62030) refer to the ZUSOs of the feature type *AX\_BoeschungKliff* (61001). The concrete attribution is defined by the attributes *OBJART\_Z* and *OBJID\_Z*. The attributes of the ZUSO are attached to all related REOs.

<i>Field</i>	<i>Data type</i>	<i>Name</i>	<i>Applies to feature types</i>
LAND	Text(3)	landeskennung	62030 AX_Strukturlinie3D
MODELLART	Text(30)	modellartenkennung	
OBJART	Text(5)	objektart	
OBJART_TXT	Text(50)	objektartText	
OBJID	Text(16)	eindeutigerObjektidentifikator	
HDU_X	Short Integer(4)	hatDirektUntenExistiert	
BEGINN	Text(20)	lebenszeitintervallBeginnt	
ENDE	Text(20)	lebenszeitintervallEndet	
OBJART_Z	Text(5)	Objektart des ZUSO	62030 (istTeilVon 61001)
OBJID_Z	Text(16)	Objekt-ID des ZUSO	62030 (istTeilVon 61001)
ART	Text(4)	art	62030
HHO	Float(6,1)	objekthoehe	62030 (istTeilVon 61001)
BEMERKUNG <sup>3</sup>	Text(200)	bemerkung	61003, 61008, 62030

<sup>3</sup> **Additional field, not part of GeoInfoDok**

### **Thema Vertical Relation**

#### **HDU01**

This theme has just one layer without geometry. Here all vertical relations between features (relation *HatDirektUnten*) are recorded in tabular form.

This level is automatically part of any data delivery.

<b>Field</b>	<b>Data type</b>	<b>Name</b>	<b>Applies to feature types</b>
LAND	Text(3)	landeskennung	
OBJART_1	Text(5)	objektart	upper feature
OBJID_1	Text(16)	eindeutigerObjektidentifikator	
EBENE_1	Text(7)	Name der Ebene	
OBJART_2	Text(5)	objektart	lower feature
OBJID_2	Text(16)	eindeutigerObjektidentifikator	
EBENE_2	Text(7)	Name der Ebene	

## 5 Topicality and completeness

The topicality fulfills at least the range of the “List of the topicality ATKIS® Basis-DLM”, regarding the feature types and attributes referred to in the “ATKIS®-Objektartenkatalog DLM250”.

The completeness is ensured by the current data of the Basis-DLM of the AdV considering the defined recording criteria of the [“ATKIS®-Objektartenkatalog DLM250”](#).

The following feature types have been completely updated in 2024:

Theme	Level	Feature type	Updates
Settlement	SIE01	52001 AX_Ortslage	31.12.2024
	SIE02	41009 AX_Friedhof	
	SIE03	51002 AX_BauwerkOderAnlageFuerIndustrieUndGewerbe	
		51004 AX_Transportanlage	
		51005 AX_Leitung	
	SIE04	51009 AX_SonstigesBauwerkOderSonstigeEinrichtung	
		52002 AX_Hafen	
		52003 AX_Schleuse	
	SIE05	52005 AX_Testgelaende	
		31001 AX_Gebaeude	
		51001 AX_Turm	
Traffic	VER01	42002 AX_Strasse	
		42003 AX_Strassenachse	
	VER02	42008 AX_Fahrwegachse	
		53003 AX_WegPfadSteig	
	VER03	42010 AX_Bahnverkehr	
		42014 AX_Bahnstrecke	
		53005 AX_SeilbahnSchwebebahn	
	VER04	42015 AX_Flugverkehr	
	VER05	57002 AX_SchiffahrtslinieFaehrverkehr	
	VER06	53001 AX_BauwerkImVerkehrsbereich	
		53002 AX_Strassenverkehrsanlage	
		53004 AX_Bahnverkehrsanlage	
		53007 AX_Flugverkehrsanlage	
		53008 AX_EinrichtungenFuerDenSchiffsverkehr	
53009 AX_BauwerkImGewaesserbereich			

<b>Theme</b>	<b>Level</b>	<b>Feature type</b>	<b>Updates</b>
Vegetation	VEG01	43001 AX_Landwirtschaft	
	VEG03	43004 AX_Heide	
		43005 AX_Moor	
		43006 AX_Sumpf	
		43007 AX_UnlandVegetationsloseFlaeche	
	VEG04	54001 AX_Vegetationsmerkmal	
Water bodies	GEW01	44005 AX_Hafenbecken	
Areas	GEB01	75003 AX_KommunalesGebiet	31.12.2024
		75004 AX_Gebiet_Nationalstaat	31.12.2024
		75005 AX_Gebiet_Bundesland	31.12.2024
		75006 AX_Gebiet_Regierungsbezirk	31.12.2024
		75007 AX_Gebiet_Kreis	31.12.2024
		75009 AX_Gebietsgrenze	31.12.2024
		75011 AX_Gebiet_Verwaltungsgemeinschaft	31.12.2024
	GEB02	74001 AX_Landschaft	
	GEB03	71006 AX_NaturUmweltOderBodenschutzrecht	
		71007 AX_SchutzgebietNachUmweltOderBodenschutzrecht	
		71011 AX_SonstigesRecht	
Relief	REL02	61001 AX_BoeschungKliff	
		62030 AX_Strukturlinie3D	

From 2021 to 2023 the other feature types have been completely updated.

## 6 Recording criteria and notes

In the following list detailed recording criteria surpassing the GeolInfoDok AFIS-ALKIS-ATKIS-schema Version 7.1.2 and additional or modified explanatory notes to the individual feature types and attribute values of the DLM250 are given.

Theme Settlement	
52001 AX_Ortslage	<p>By means of the OBJID it is possible to derive more details for the objects by a linkage with the <a href="#">Gazetteer GN250</a> (available exempt from charges at BKG).</p> <p>An object is also modelled punctiform if it is an independent local authority without a site of its own (association of local authorities).</p>
31001 AX_Gebaeude	<p>Objects with GFK=2072 'youth hostel': all objects</p> <p>Objects with GFK=2073 'shelter (with accommodation)': with an overnight accommodation of more than 19 beds</p> <p>Objects with GFK=2090 'leisure and entertainment venues': important objects which are recognizable as such due to their building</p> <p>Objects with GFK = 3010 'administration building': buildings of the supreme authority of the immediate federal administration</p> <p>Objects with GFK=3011 'parliament': buildings of parliaments of Germany on the levels of the federation and land</p> <p>Objects with GFK=3015 'court': buildings of the supreme authority of the federal courts</p> <p>Objects with GFK=3020 'building for education and development': all objects of type 'planetarium'</p> <p>Objects with GFK=3032 'theater, opera': significant buildings, recognizable as such</p> <p>Objects with GFK=3033 'concert hall': significant buildings, recognizable as such</p> <p>Objects with GFK=3034 'museum': all objects, if run by the state or the Federal Land, otherwise: selection</p> <p>The objects with GFK=3041 'church' are not only selected according to cultural, historical or topographical significance, but, also due to the special characteristics of the recording basis, to the object height.</p> <p>Objects with GFK=3042 'synagogue': significant buildings, recognizable as such</p> <p>Objects with GFK=3045 'house of worship': significant buildings, recognizable as such</p> <p>Objects with GFK=3046 'mosque': significant buildings, recognizable as such</p> <p>Objects with GFK=3047 'temple': significant buildings, recognizable as such</p> <p>Objects with GFK=3048 'monastery': significant buildings, recognizable as such</p> <p>Objects with GFK=3051 'hospital': all objects with a capacity of at least 500 beds</p> <p>Objects with GFK=3072 'fire department': all objects with the status of a professional fire brigade</p> <p>Objects with GFK=3075 'prison': all objects</p>

51006 AX_BauwerkOderAnlageFuerSport FreizeitUndErholung	Objects with BWF=1610 'zoo' or BWF=1620 'safari-park, wildlife park' or BWF=1630 'amusement park' are recorded punctiform from 10 to 20 ha.
51007 AX_HistorischesBauwerkOder HistorischeEinrichtung	Objects in selection.

Theme Traffic	
<p>42002 AX_Strasse</p> <p>42003 AX_Strassenachse</p>	<p>Objects of the supralocal road traffic network with a road width of at least 5 meter (solid surface with at least two lanes) are completely recorded.</p> <p>Objects of local roads with a road width of at least 5m (solid surface with at least two lanes) which serve the large-scale development of areas of settlement, industry and industrial real estate are recorded in selection.</p> <p>Traffic routes with one lane are only recorded if they connect topographically important objects which are not otherwise linked to the road traffic.</p> <p>The attribute 'BRF' 'breiteDerFahrbahn' has been calculated on the basis of standard values considering the road category and the number of lanes. The minimum value for one lane is 2,5 meter.</p> <p>The attribute 'BEMERKUNG' contains the remark whether the object is a slip road on or off the major street.</p>
<p>42014 AX_Bahnstrecke</p>	<p>Within the generalization several railway lines may run on one linear geometry in an operating sense.</p> <p>The attribute 'NRB' contains the operational line number(s) for the lines of "DB-AG" and of some private railway companies. The line numbers were collected from documents on the DB network. In case of multiple line numbers all of them are listed.</p> <p>The attribute 'ELK' 'elektrifizierung' has the value '1000' 'electrified' if at least one line on the represented linear geometry has an electrified state.</p> <p>The attribute 'GLS' 'anzahlDerStreckengleise' has the value '2000' 'double track' if at least one double track is situated on the represented linear geometry.</p> <p>Due to the limited source material it was not possible to attribute all railway lines completely. Especially for industrial railways the fields 'ELK' and 'GLS' are not attributed in several cases.</p>
<p>53001 AX_BauwerkImVerkehrsbereich</p>	<p>Besides the actual length, the length of an object with ART=1800 'bridge' also depends on the mapping base and for an overpass corresponds to at least the width of the symbol for the overpassed object.</p> <p>Objects with ART=1800 'bridge' over linear modelled water bodies are only recorded for exceptional cases.</p> <p>Objects with ART=1870 'tunnel' are completely recorded in the course of the railway lines.</p>
<p>53004 AX_Bahnverkehrsanlage</p>	<p>Objects not serving the passenger railway traffic are additionally recorded completely.</p>
<p>57002 AX_SchiffahrtslinieFaehrverkehr</p>	<p>Objects with ART=1730 'passenger ferry traffic' are only recorded in the sea.</p> <p>Objects which cross a linear water body are also modelled linear.</p>

Theme Water bodies	
44002 AX_Wasserlauf 44003 AX_Kanal	Objects receive a water bodies key number in the attribute 'GWK' (only 1st-19th position), if the objects have a water bodies catchment area >10km <sup>2</sup> . These objects have to be reported for the "EU Water Framework Directive"

Theme Areas	
75003 AX_KommunalesGebiet 75004 AX_Gebiet_Nationalstaat 75005 AX_Gebiet_Bundesland 75006 AX_Gebiet_Regierungsbezirk 75007 AX_Gebiet_Kreis 75011 AX_Gebiet_Verwaltungsgemeinschaft	If objects of the administrative areas are placed on sea areas, Lake Constance or – at some big estuaries – on areal modelled watercourses, they are recorded as independent objects.
74001 AX_Landschaft	Complete recording of the objects which are composed by the <a href="#">permanent committee on geographical names</a> and shown in the webservice 'Landschaften Deutschlands' of the Bundesamtes für Kartographie und Geodäsie. The objects modelled as areas may – due to the topographical location in nature – partially overlap or overlay. The objects don't have a topological connection.



<b>Theme Relief</b>	
61003 AX_DammWallDeich	Objects not serving FKT=3001 'flood water protection, storm tide protection' or FKT=3003 'flood water protection, storm tide protection with traffic-way, are additionally recorded in selection.
61008 AX_Hoehenlinie	<p>In consideration of the objects of the water bodies the contours have been automatically derived from the digital terrain model (DGM25, resolution 25 m).</p> <p>The objects are adjusted. The slope direction is located – considered from the initial reference point to the end reference point – on the left.</p> <p>The contour intervals depend on the absolute height:</p> <ul style="list-style-type: none"> <li>- 25 m for 'lowlands' (up to 100 m)</li> <li>- 50 m for 'low mountains' (over 100 m up to 1500 m)</li> <li>- 100m for 'high mountains' (over 1500 m)</li> </ul>
62030 AX_Strukturlinie3D	The objects are adjusted. The slope direction is located – considered from the initial reference point to the end reference point – on the left.

<b>General</b>	
Foreign State Territory	<p>The extension of the DLM250 is limited on the German federal territory. This also applies to the seaward boundary of the German territory.</p> <p>Adjoining foreign landscape objects are only represented for the following exceptions</p> <p>Areal modelled water bodies with the according axis of water lines, the standing water bodies and possibly existing buildings in water bodies are completely recorded, if the national boundary is situated between the shorelines.</p> <p>Example: Rhein, Oder, Bodensee</p>

## **7 Further Information**

Further information concerning the product are available at [gdz.bkg.bund.de](https://gdz.bkg.bund.de). In case of any questions, you are welcome to contact our service centre at [dlz@bkg.bund.de](mailto:dlz@bkg.bund.de).

General information regarding the Federal Agency for Cartography and Geodesy can be found on our homepage [www.bkg.bund.de](https://www.bkg.bund.de).