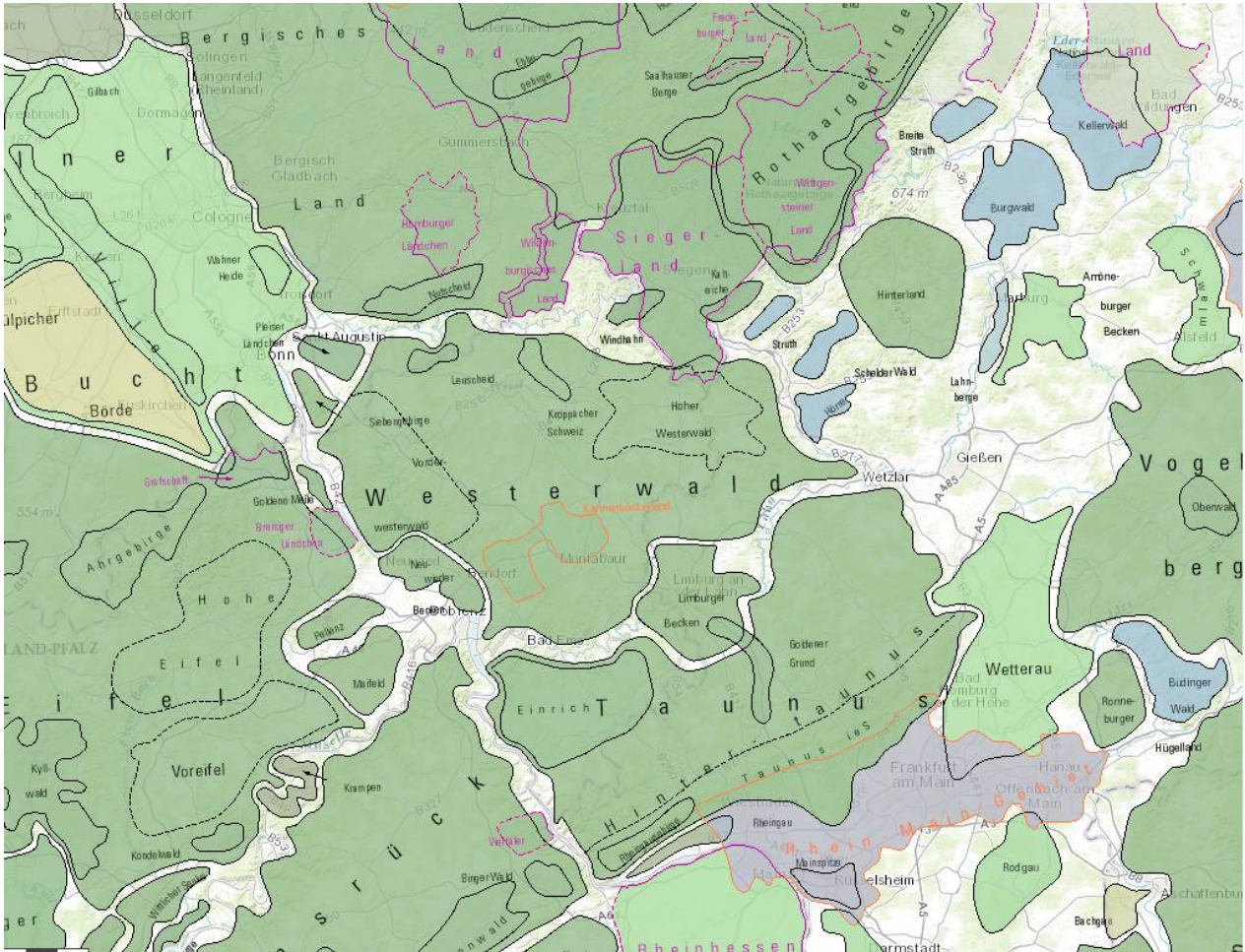




Landscapes of Germany



Documentation as of 30 October 2017

Table of Contents:

	Page
1 Data stock overview	3
2 Description of the contents of the data stock	4
2.1 General	4
2.2 Description of the attributes of the data stock	4
3 Terms of use and copyright	5
4 Data supply	5

1 Data stock overview

Product	: Landscapes of Germany
Contents	: Germany – landscapes – names and delimitations, landscape descriptions
Area	: Federal Republic of Germany
Georeferencing	: <ul style="list-style-type: none">- Gauss-Krueger Projection in the 3rd, 4th or 5th meridian strip, Bessel ellipsoid, Potsdam Datum (central point Rauenberg)- UTM projection in zone 32 or 33, Ellipsoid GRS80, Datum ETRS89- Geographical coordinates in decimal degrees, Ellipsoid GRS80, Datum ETRS89
Currentness	: 1 January 2014 Updating in irregular intervals
Sources	: <ul style="list-style-type: none">- Deutschland – Landschaften - Namen und Abgrenzungen, thematically edited by the Permanent Committee for Geographic Names (StAGN) on the basis of the Topographic Map 1:1,000,000 of the Federal Agency for Cartography and Geodesy.- Landschaftsbeschreibungen: Herbert Liedtke: Namen und Abgrenzungen von Landschaften in der Bundesrepublik Deutschland, 3rd edition 2002, 156 pages, Volume 239 in the series „Forschungen zur deutschen Landeskunde“, Deutsche Akademie für Landeskunde, self-published, ISBN: 3-88143-050-4.
Production method	: manual digitization
Data supply	: free of charge as view service

2 Description of the contents of the data stock

2.1 General

Landscapes are parts of the earth surface that are characterized in a certain way with regard to its appearance (landforms, vegetation, population, cultivation).

Landscape names are vernacularly used names, the origin of which may be of natural, historical, economical or other kind.

In contrast to political entities (e.g. municipality, district) the boundaries of which are clearly and legally defined by official surveying, for landscapes there are usually no determined, but only imprecise limits that are not legally determined.

In most cases, the delimitations depicted in the map can only be seen as "border seams" in the range of which the affiliation of single areas to a particular landscape cannot be derived bindingly.

2.2 Description of the attributes of the data stock

Attribute name	Meaning
OBJECTID	Identifier
NAM	Landscape name
DETAIL_INFO	Landscape type
Beschreibung	Landscape descr

3 Terms of use and copyright

The WMS service is provided to the public free of charge as view service, i.e., there is the right for internal use and for integrating the service into an own website; a duplication of the map or other exploitations of the map/the service are not allowed. Duplication is for example reprinting, photocopying, microfilming, digitising, scanning and storing on data carriers. The data transferred together with the service may be used only in connection with the service and shall not be stored. An extraction or further use of data outside the service is not allowed.

Source reference and indication of alteration have to be formulated as follows. For a representation on a website, the source reference has to be linked to the URL "<http://www.bkg.bund.de>".

Map: © BKG, StAGN 2014; Landscape descriptions: © Herbert Liedtke, Namen und Abgrenzungen von Landschaften in der Bundesrepublik Deutschland, 3. Auflage 2002, Band 239 in der Reihe „Forschungen zur deutschen Landeskunde“, Deutsche Akademie für Landeskunde, Selbstverlag.

4 Data supply

The data stock is provided as web service free of charge under

www.geodatenzentrum.de → Open Data

For inquiries, please contact:

Bundesamt für Kartographie und Geodäsie
Referat GI5 – Service Center
Karl-Rothe-Straße 10-14
D-04105 Leipzig

Phone: +49(0)341 5634 333

Fax: +49(0)341 5634 415

E-mail: dlz@bkg.bund.de

For further information and services, please refer to www.geodatenzentrum.de.